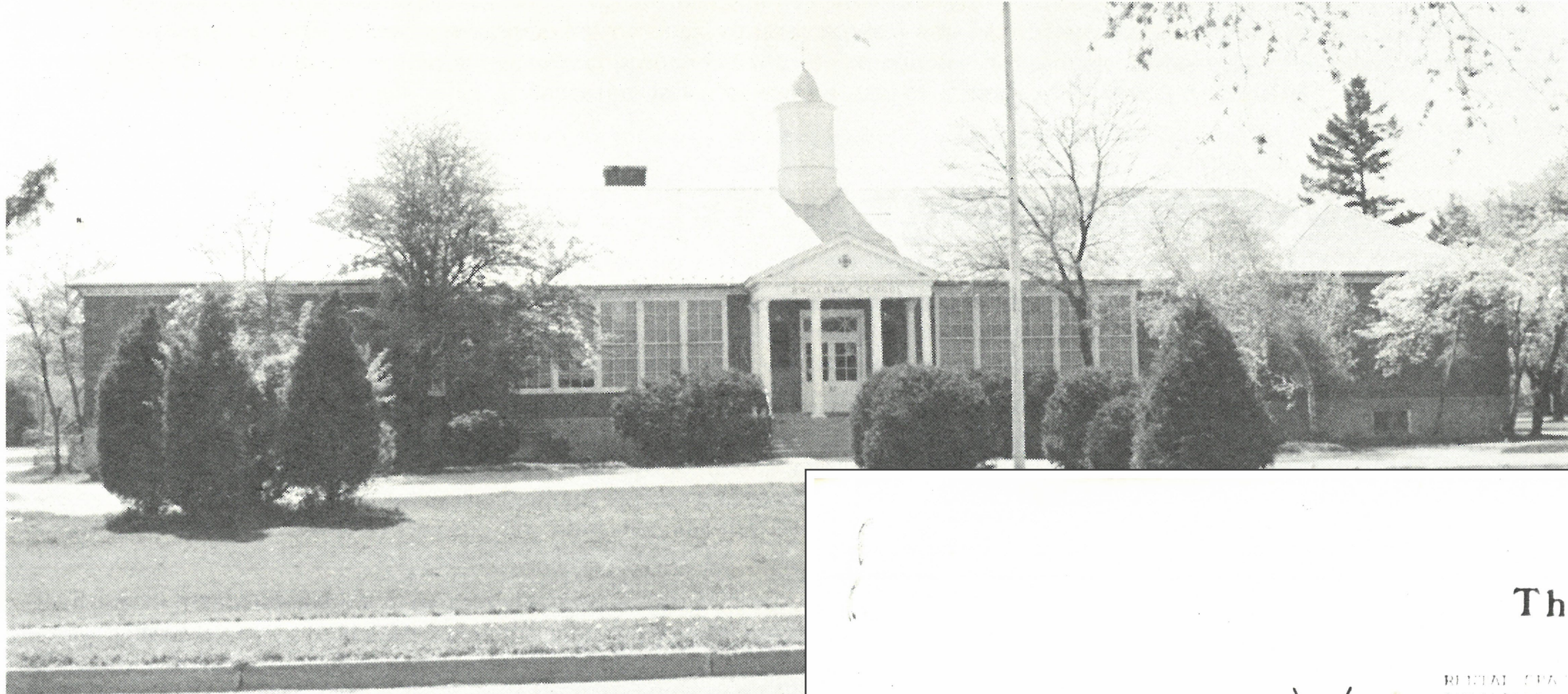
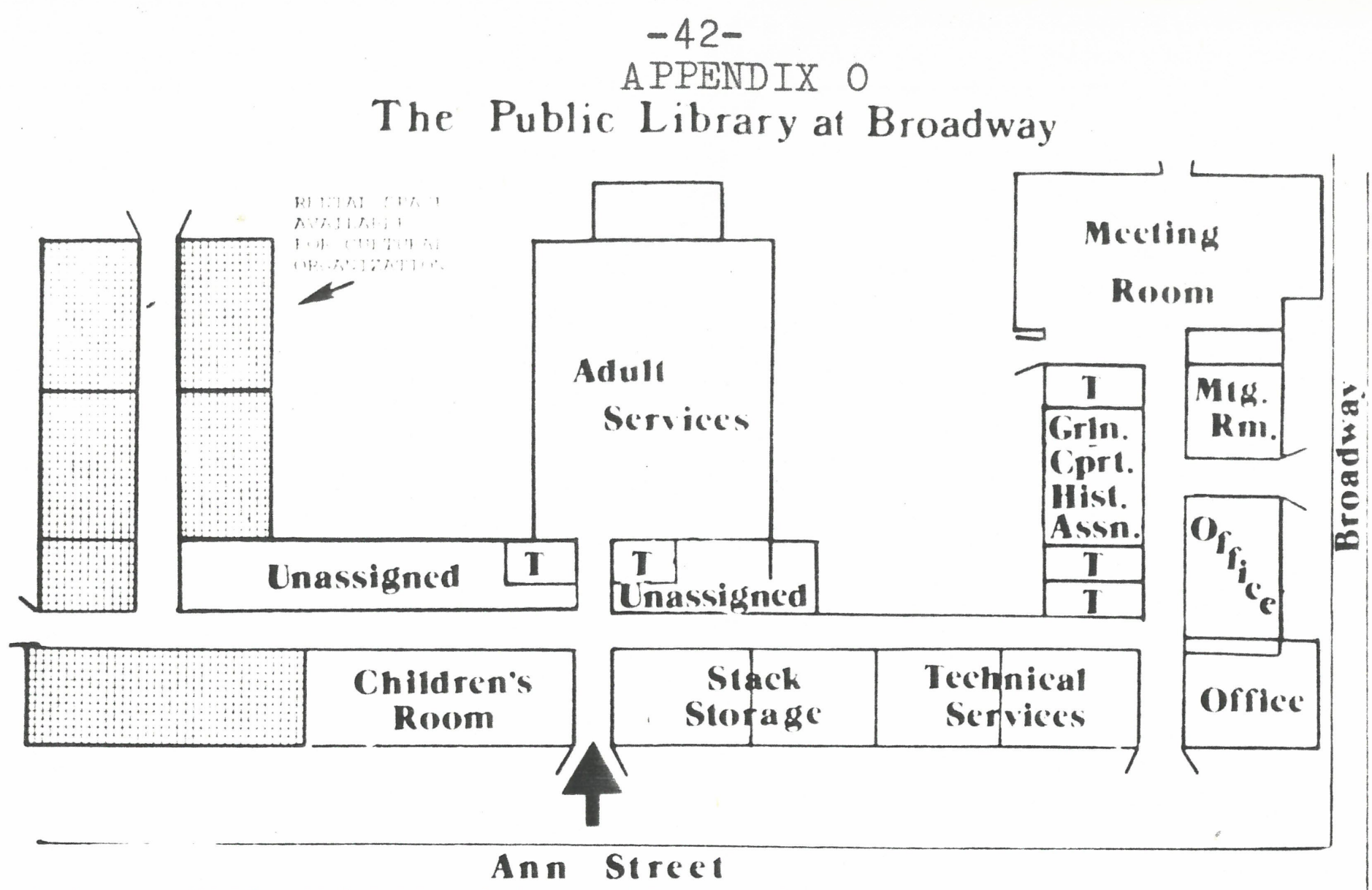


THE PUBLIC LIBRARY AT BROADWAY



A DISCUSS

- * The Upcoming Me
- * The Library B
- (Tues., June 15th, 3-10
- * Summe



THE LIBRARY IS MOVING!!

The library is moving again . . . to its new home, the Broadway Elementary School. Broadway will now become the permanent facility for the library in Harborfields, giving it its own building and site. This offers Harborfields a true community center where library services and events will be offered in a manner never available to the community before. The Library Board, after listening to community opinions, feels that this exciting move to a permanent facility is the best event to happen to the library since it began in 1970. The Board fully intends to use Broadway's vast potential to offer the best possible service to this community.

WHY MUST THE LIBRARY MOVE? . . .

. . . SPACE

One of the main considerations in the move is the library's extreme need for additional space, which the School Board has indicated cannot be given to the library in its present quarters. Though the library may now seem to be adequate, in fact, all available space is filled. Our new home at Broadway will give us approximately two-and-a-half times the space we now have.

Reader space is presently so congested that there is no area for quiet, private study or reading. Many patrons, adults, students, writers, even casual readers, have told us that they are being forced to go outside our community in order to use other libraries because even when this library has the necessary materials, the lack of adequate reader space is uncondusive to their needs. In addition, we have no more room for additional new materials, and in order to put up more stacks we would have to further reduce the number of patron seats available. The other alternative is to split the collection and put part of it into a back storage room where it would be unavailable for public browsing.

Not only are the public service areas congested, but our supportive staff is presently located in a single classroom in which all library materials must be ordered, received, cataloged, and processed. When the library purchases 7000 books a year as well as other materials, this limitation in space means that these materials get backlogged and take much longer to reach you. With more work space, supportive staff will be able to process materials more efficiently and you will get them more quickly.

. . . LOCATION

The centrality of the Broadway location in Harborfields is as important as the library's spacial needs. The Broadway School has, since 1924, played an important role in the community's cultural and educational development. The library will now be able to continue and expand this public-oriented use of the building. One of the exciting possibilities being explored for the new library is a Harborfields Historical Room, operated by the Greenlawn-Centerport Historical Association, which will contain books, photographs, and memorabilia pertaining to the history of this area. This service, open to the public, offers a new dimension to the community and is just one of the opportunities being made possible by the library's move to its new permanent quarters. [see floor plan of your new library above.]

WHAT IS THE MOVE GOING TO COST??

The School District has estimated a savings to the community of \$110,000/year by closing down the Broadway School. The library estimates a yearly, recurring expenditure of approximately \$40,000 to maintain the building and site as a public service institution. Thus, for a net savings of \$70,000/year the community will have at its center a viable public library which is serving it, rather than a possibly vacant building.

The Library explains the benefits of moving to its own building to the community in this 1976 Summer Newsletter.